

Data Download Tool



CHAPTER 11 – DATA DOWNLOAD TOOL

The **Download Tool** (including sub-modules) are available within the Data Repository module. The [Data Repository](#) users can download selected datasets from the repository to their local machines. The Data Download tool (available via the Data Download module) assists users in this task. This download tool also allows for download from the Query Tool module. The tool runs locally as a Java Web Start application on a user's computer (requires the Java runtime environment).

11.1.1 Module Input and Output

Module Input

- ❖ Selecting data accessible through the data repository and the query tool modules.

Module Output

- ❖ Data downloaded to your computer.

11.2 RUNNING THE DATA DOWNLOAD TOOL

To run the **Data Download Tool**:

- ❖ First, **create and populate a download queue** with datasets for download.
- ❖ Then, run the **Data Download** tool to download the datasets from the download queue. See Download queue below:

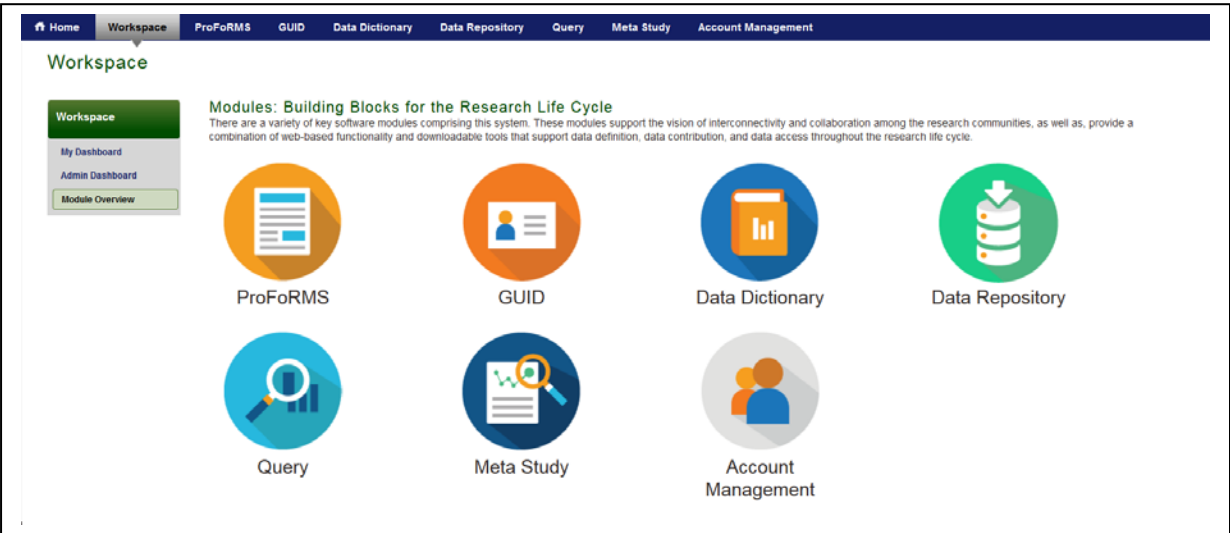
11.2.1 Download Queue

The Data Download feature helps users to select and download datasets from the data repository and query tool to their own computer systems. Users may select datasets to download by placing them in their Download Queue (see below). Then, using The Download Tool, users may download selected datasets from the repository to their own systems.

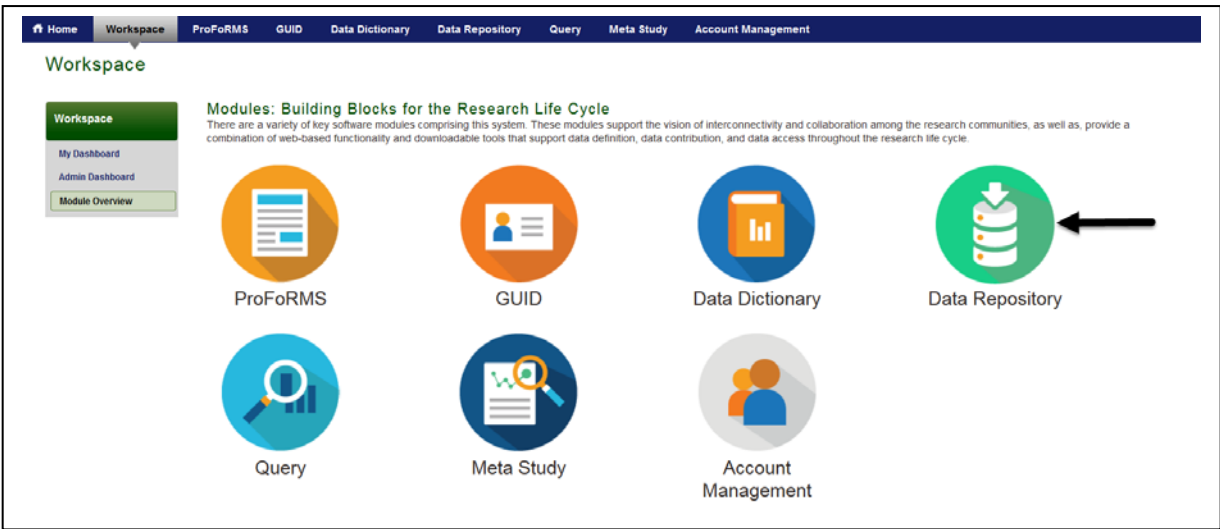
Steps to Populate the Download Queue

To Populate [Download Queue](#): Perform the following actions:

1.
- Log into BRICS, and navigate to your Workspace Workspace where all modules you have access to are displayed. **Note:** if the module is greyed out then you do not have access to the module. Please reach out to BRICS Operations to inquire about access should you not have access.



2.
- Click the **Data Repository** module.



- Data Repository**

The user has permissions to view. The provided filters will allow users to filter the list by ownership, data submission status, and data type. The search capability allows users to search by Study Title, (PI), and by the Permission Type that the user holds for a particular study (Owner, Admin, Read, Write).

format to include the following:

STUDY ID	PI	DATA TYPES	PERMISSION
FITBIR-STUDY0000211	Geoff Manley, MD	[Icons]	Admin
FITBIR-STUDY0000208	Bianca Sravo	[Icons]	Admin
FITBIR-STUDY0000239	Geoff Manley, MD	[Icons]	Admin
FITBIR-STUDY0000232	Evan McCreedy	[Icons]	Admin
FITBIR-STUDY0000233		[Icons]	Admin
FITBIR-STUDY0000243	Geoff Manley, MD	[Icons]	Admin
FITBIR-STUDY0000207	Bianca Sravo	[Icons]	Admin
FITBIR-STUDY0000244	Geoff Manley, MD	[Icons]	Admin
CNIRM-STUDY0000245		[Icons]	Admin
FITBIR-STUDY0000246	Alison Garcia	[Icons]	Admin
FITBIR-STUDY0000247	Geoff Manley, MD	[Icons]	Admin
FITBIR-STUDY0000248	Geoff Manley, MD	[Icons]	Admin
FITBIR-STUDY0000250		[Icons]	Admin
FITBIR-STUDY0000229		[Icons]	Admin
FITBIR-STUDY0000251	Geoff Manley, MD	[Icons]	Admin

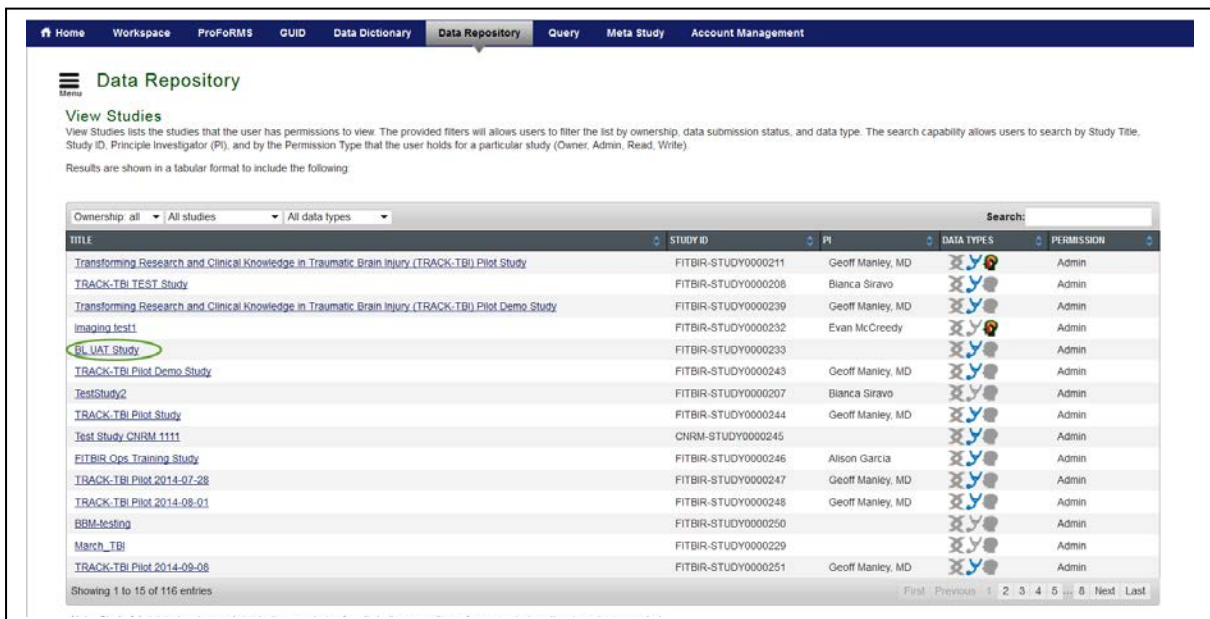
Showing 1 to 15 of 116 entries

Note: Study Administrators have administrative permission for all studies regardless of any permissions they have been granted.

- In the list of studies that appears, find a study from which you wish to download a dataset(s). If the study you wish to download data from did not appear in the study list, make sure you have permissions to view that study/download data from that study. Contact the Operations Team in order to know your permissions.

Make sure that the data types icons next to the study name are highlighted in color. That means that the study has datasets uploaded. If the icons next to the study name are highlighted in color, the study has datasets of the highlighted types.

Select the **Study** from which you wish to download a dataset by clicking on the **Study Title**. [Note: *View Studies* lists the studies that the user has permissions to view. Note: All study meta data is public, but you can see your permission to the study in the “permission” column in the table.]. The provided filters will allow users to filter the list by ownership, data submission status, and data type. The search capability allows users to search by: (**Study Title**, **Study ID**, **Principal Investigator (PI)**, and by the **Permission Type**) that the user holds for a particular study (Owner, Admin, Read, Write). Note:



Data Repository

View Studies

View Studies lists the studies that the user has permissions to view. The provided filters will allow users to filter the list by ownership, data submission status, and data type. The search capability allows users to search by Study Title, Study ID, Principle Investigator (PI), and by the Permission Type that the user holds for a particular study (Owner, Admin, Read, Write).

Results are shown in a tabular format to include the following:

TITLE	STUDY ID	PI	DATA TYPES	PERMISSION
Transforming Research and Clinical Knowledge in Traumatic Brain Injury (TRACK-TBI) Pilot Study	FITBIR-STUDY0000211	Geoff Manley, MD		Admin
TRACK-TBI TEST Study	FITBIR-STUDY0000208	Blanca Siravo		Admin
Transforming Research and Clinical Knowledge in Traumatic Brain Injury (TRACK-TBI) Pilot Demo Study	FITBIR-STUDY0000239	Geoff Manley, MD		Admin
Imaging Test1	FITBIR-STUDY0000232	Evan McCreedy		Admin
EL UAT Study	FITBIR-STUDY0000233			Admin
TRACK-TBI Pilot Demo Study	FITBIR-STUDY0000243	Geoff Manley, MD		Admin
TestStudy2	FITBIR-STUDY0000207	Blanca Siravo		Admin
TRACK-TBI Pilot Study	FITBIR-STUDY0000244	Geoff Manley, MD		Admin
Test Study CHRM 1111	CHRM-STUDY0000245			Admin
FITBIR Ops Training Study	FITBIR-STUDY0000246	Alison Garcia		Admin
TRACK-TBI Pilot 2014-07-28	FITBIR-STUDY0000247	Geoff Manley, MD		Admin
TRACK-TBI Pilot 2014-08-01	FITBIR-STUDY0000248	Geoff Manley, MD		Admin
BIM-testing	FITBIR-STUDY0000250			Admin
March_TBI	FITBIR-STUDY0000229			Admin
TRACK-TBI Pilot 2014-09-08	FITBIR-STUDY0000251	Geoff Manley, MD		Admin

Showing 1 to 15 of 116 entries

- Navigate to the bottom of the page and click on the "+" sign to expand the **Data Set Submissions** section.

Home
Workspace
ProFoRMS
GUID
Data Dictionary
Data Repository
Query
Meta Study
Account Management

Data Repository

View Studies > BL UAT Study

Study: BL UAT Study

Study Overview:

Title : BL UAT Study

Study ID : FITBIR-STUDY0000233

Study ID Source : BRICS System Generated

Study DOI :

Study DOI Source :

Visibility : Public

Recruitment Status : Terminated

Study Type :

Study URL :

Abstract : Test Study for 2.0

Study Aims :

Start Date : 2013-01-16

End Date : 2018-05-19

Duration : 1948 days

Primary Funding Source :

Estimated Number of Subjects :

Study Research Management :

Study Site :

Showing 1 to 2 of 2 entries

TITLE	FULL NAME	E-MAIL	ORGANIZATION
Data Manager	Portal Admin	janedoe@test.com	
Data Manager	Portal Admin	janedoe@test.com	

Showing 0 to 0 of 0 entries

SITE NAME	ADDRESS	CITY	STATE	COUNTRY	PHONE NUMBER
No data available in table					

+ Administrative Files

+ Dataset Submissions

+ Data Access Report

CLOSE

- The list of datasets submitted to the study appears. Note: in order to view and download datasets from a selected study you must have permissions to do that. Contact the Operations Team in order to know your permissions. Select the Dataset you wish to download by clicking on its name.

[Home](#)
[Workspace](#)
[ProFoRMS](#)
[GUID](#)
[Data Dictionary](#)
[Data Repository](#)
[Query](#)
[Meta Study](#)
[Account Management](#)

Data Repository

[View Studies](#) > BL UAT Study

Study: BL UAT Study

Study Overview:

Title : BL UAT Study EDIT

Study ID : FITBIR-STUDY000233

Study ID Source : BRICS System Generated

Study DOI :

Study DOI Source :

Visibility : Public

Recruitment Status : Terminated

Study Type :

Study URL :

Abstract : Test Study for 2.0

Study Aims :

Start Date : 2013-01-16

End Date : 2018-05-19

Duration : 1948 days

Primary Funding Source :

Estimated Number of Subjects :

Study Research Management :

TITLE	FULL NAME	E-MAIL	ORGANIZATION
Data Manager	Portal Admin	janedoe@test.com	
Data Manager	Portal Admin	janedoe@test.com	

Showing 1 to 2 of 2 entries

- Dataset Submissions

Show shared & private

DATASET ID	NAME	SUBMISSION DATE	TYPE	STATUS	# OF REC.
FITBIR-DATA0000456	NINRRRCSSEMC06US_Demo-1489510836176	2017-03-14	Clinical Assessment	Private	9
FITBIR-DATA0000380	test010616-AIHC-d	2016-01-06	Clinical Assessment	Private	1
FITBIR-DATA0000374	BSI18Q22015	2015-10-01	Clinical Assessment	Private	1
FITBIR-DATA0000368	DemogFITBIR-1435855195397	2015-07-02	Clinical Assessment	Private	4
FITBIR-DATA0000354	AllTest	2015-01-15	Clinical Assessment	Private	1199
FITBIR-DATA0000353	BSI-18-QTDemo	2015-01-14	Clinical Assessment	Private	1199
FITBIR-DATA0000341	testentry	2014-11-25	Clinical Assessment	Private	2
FITBIR-DATA0000339	TMT112014	2014-11-20	Clinical Assessment	Private	2
FITBIR-DATA0000322	BSI18Q73114	2014-07-31	Clinical Assessment	Private	3
FITBIR-DATA0000321	test18	2014-07-31	Clinical Assessment	Private	3
FITBIR-DATA0000297	BSI-18_Test	2014-06-19	Clinical Assessment	Shared	3
FITBIR-DATA0000290	BSI-18_Baseline	2014-06-04	Clinical Assessment	Private	3
FITBIR-DATA0000265	Blood Pressure Measurement	2014-05-16	Clinical Assessment	Shared	1

Showing 1 to 13 of 13 entries (filtered from 14 total entries)

+ Data Access Report

CLOSE

7. A pop-up window opens with information regarding the dataset. Note the big green **Add to Download Queue** button in the upper right corner. This is only visible if you have access to download this data.

Dataset Information

Dataset ID: FITBIR-DATA0000354

Name: AliTest

Submission Date: 2015-01-15

Submitted By: Garcia, Alison

Submitted Data:

DATA	CONTAINS QUERYABLE DATA?
dataFile-1421348940008.xml	No
BSI-18.csv	Yes

Submitted Form Structures:

FORM STRUCTURE

BSI_18_V4

Status: Private

Proposed Publication Date:

Reviewed By:

Ops Verification:

ADD TO DOWNLOAD QUEUE

8. Click the **Add to Download Queue** button to add the dataset to the download queue. The Add to Download Queue button changes to the "Added to download queue" status message and the selected dataset appears in the d ownload queue table.

Dataset Information

Dataset ID: FITBIR-DATA0000354

Name: AliTest

Submission Date: 2015-01-15

Submitted By: Garcia, Alison

Submitted Data:

DATA	CONTAINS QUERYABLE DATA?
dataFile-1421348940008.xml	No
BSI-18.csv	Yes

Submitted Form Structures:

FORM STRUCTURE

BSI_18_V4

Status: Private

Proposed Publication Date:

Reviewed By:

Ops Verification:

ADD TO DOWNLOAD QUEUE

9. The Dataset is **Added to Download Queue**. You will receive an autogenerated e-mail indicating “*Requested data is now available in the Download Manager*”.

Dear Doe, Jane,
|
Your Sep 11, 2017, 12:52:53 PM, request for Dataset: AliTest_233 is now available in the Download Manager. If you have any questions, please email or call the Operations team.

Thanks,

The BRICS Operations team

10. To download the dataset(s) from the download queue to your computer, run the **Data Download Tool**.

11.2.2 Best Practices

What you can do with the entries in the download queue(After downloading the tool)

- ❖ To delete a single dataset from the the download queue, select it (using a checkbox) and press Delete Selected.
- ❖ To delete multiple datasets from the the download queue, select them using the checkboxes (or select all) and press Delete Selected.
- ❖ To sort the download queue table by the dataset name, use the small triangle next to the Dataset column name.

11.2.1 Running the Download Tool

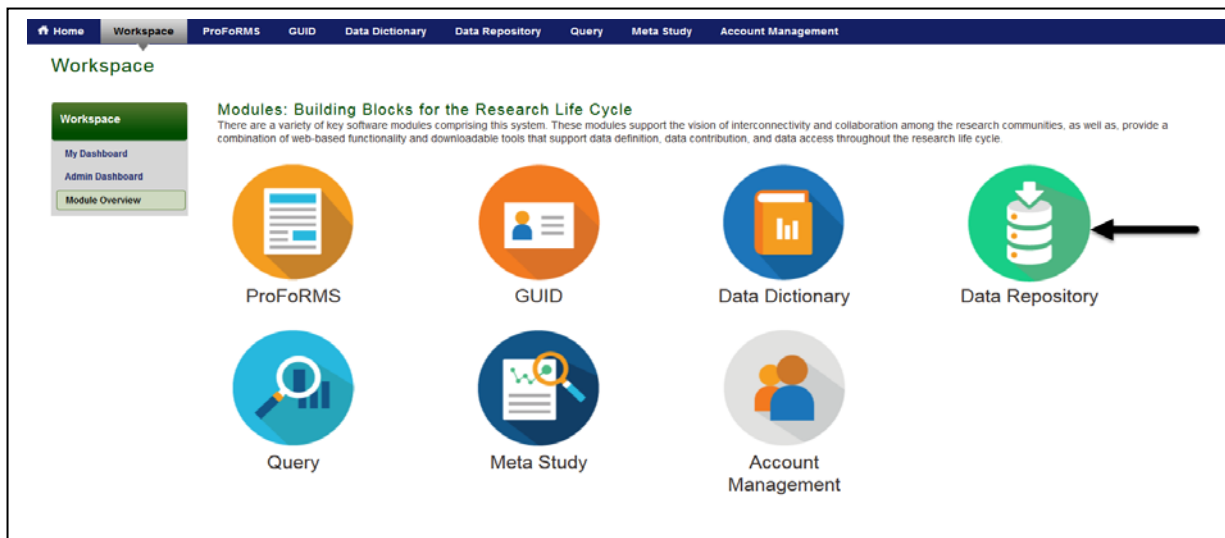
The **Download Tool** (including any sub-modules) are available within the Data Repository module. The **Data Repository** users can download selected datasets from the repository to their local machines by placing them in their Download Queue (see below). The **Data Download** tool (available via the Data Download module) assists users in this task. The tool runs locally as a Java Web Start application on a user's computer, and requires the most recent version of [Java Runtime Environment \(JRE\)](#) (7 or higher) to be installed.

To launch the [Download Tool](#): Perform the following actions:

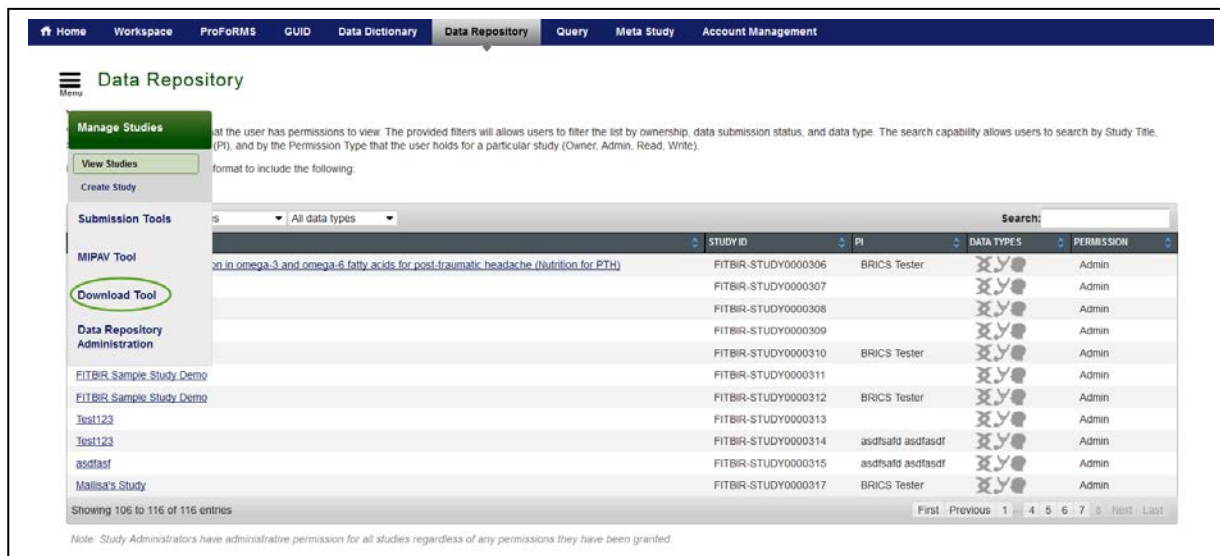
1. Navigate to your Workspace,



2. Click the **Data Repository** module from your Workspace,

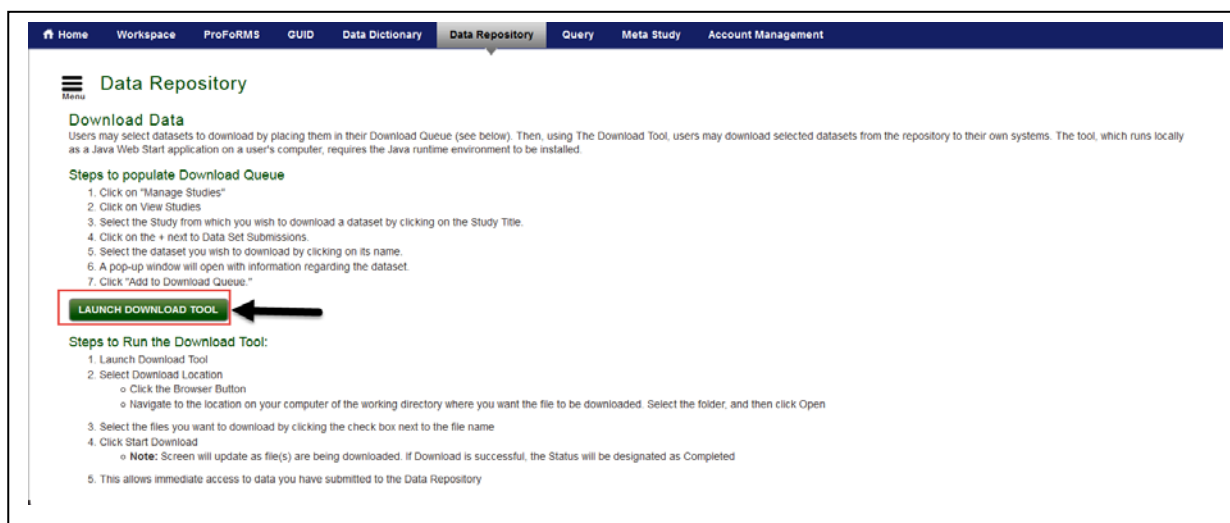


3. Click the **Download Tools** on the left-side menu.



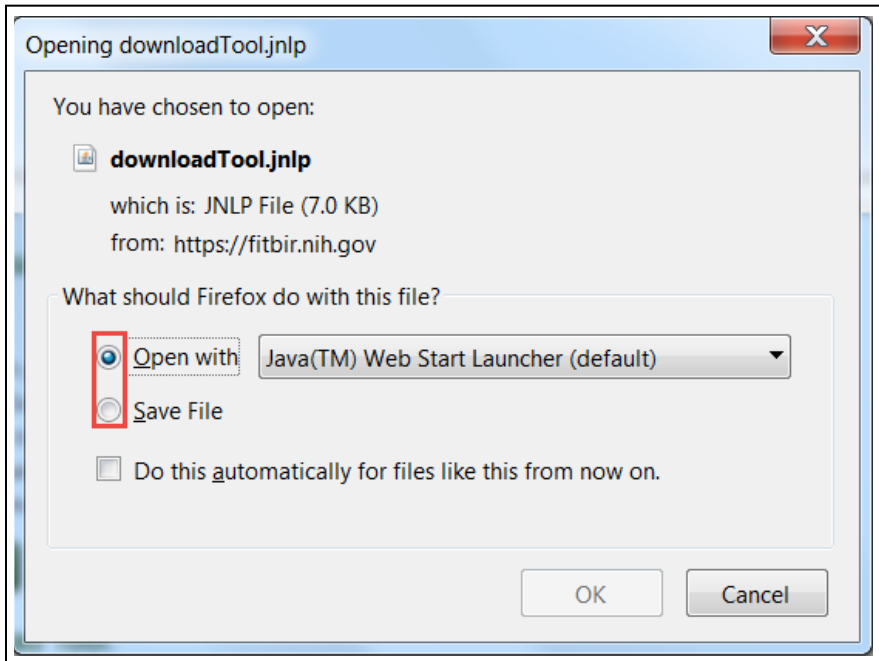
The screenshot shows the BRICS Data Repository interface. The top navigation bar includes links for Home, Workspace, ProFORMS, GUID, Data Dictionary, **Data Repository**, Query, Meta Study, and Account Management. The left sidebar menu is expanded, showing options like Manage Studies, View Studies, Create Study, Submission Tools, MIPAV Tool, **Download Tool** (highlighted with a red circle), Data Repository Administration, and a list of studies. The main content area displays a table of studies with columns for STUDY ID, PI, DATA TYPES, and PERMISSION. The table lists 17 studies, including FITBIR-STUDY0000306 through FITBIR-STUDY0000317. A search bar is located at the top right of the table. Below the table, it indicates 'Showing 106 to 116 of 116 entries' and includes pagination controls (First, Previous, 1, 4, 5, 6, 7, 8, Next, Last). A note at the bottom states: 'Note: Study Administrators have administrative permission for all studies regardless of any permissions they have been granted.'

4. Click **Launch the Download Tool**.

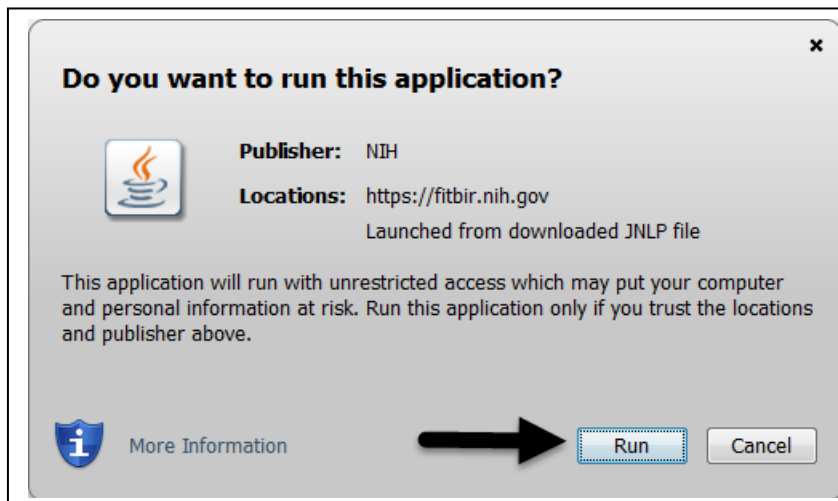


The screenshot shows the 'Download Data' page in the BRICS Data Repository. The top navigation bar is the same as in the previous screenshot. The left sidebar menu is expanded, and the 'Download Tool' option is selected. The main content area is titled 'Download Data' and contains instructions for downloading datasets. It includes a section 'Steps to populate Download Queue' with 7 numbered steps. Below this, there is a red box containing the text 'LAUNCH DOWNLOAD TOOL' with a black arrow pointing to it. Underneath, there is a section 'Steps to Run the Download Tool:' with 5 numbered steps. The first step is 'Launch Download Tool'. The second step is 'Select Download Location', which includes sub-steps: 'Click the Browser Button' and 'Navigate to the location on your computer of the working directory where you want the file to be downloaded. Select the folder, and then click Open'. The third step is 'Select the files you want to download by clicking the check box next to the file name'. The fourth step is 'Click Start Download', which includes a note: 'Note: Screen will update as file(s) are being downloaded. If Download is successful, the Status will be designated as Completed'. The fifth step is 'This allows immediate access to data you have submitted to the Data Repository'.

5. In the Opening **downloadTool.jnlp** window that appears, Click **Open with Java(TM) Web Start Launcher** (default) and Click **OK**.



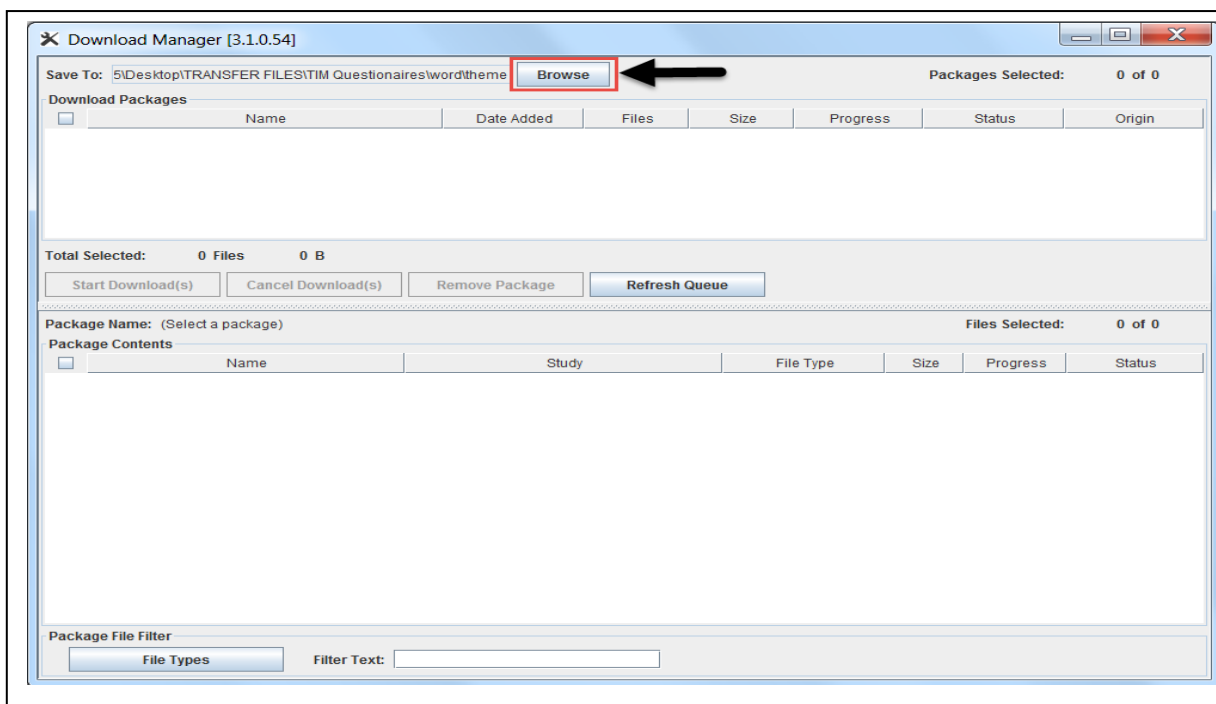
6. In the **Java Runtime Environment** window that appears next saying "**Do you want to run this application?**", Click **Run**.



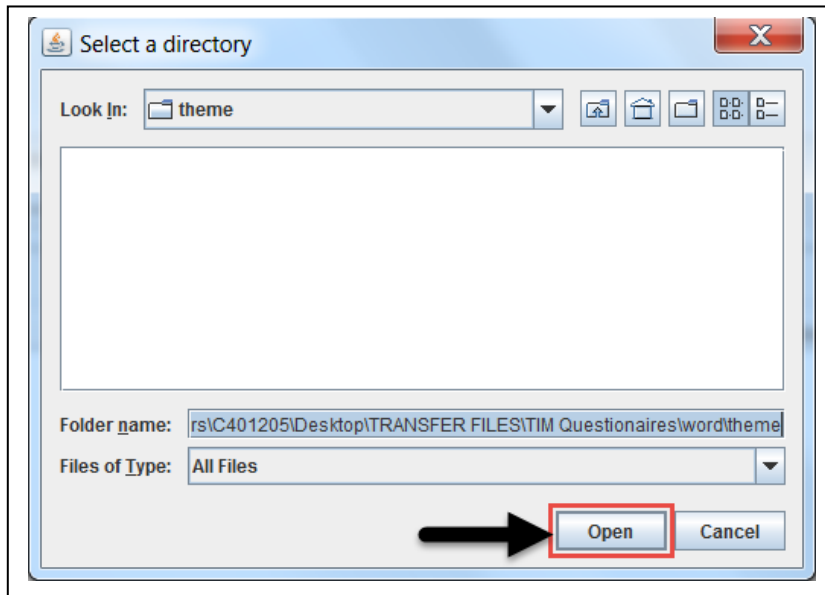
7. The EULA Agreement window appears displaying the data privacy user agreement. Read the agreement and Click **Accept** if you agree. The Download Manager window appears.



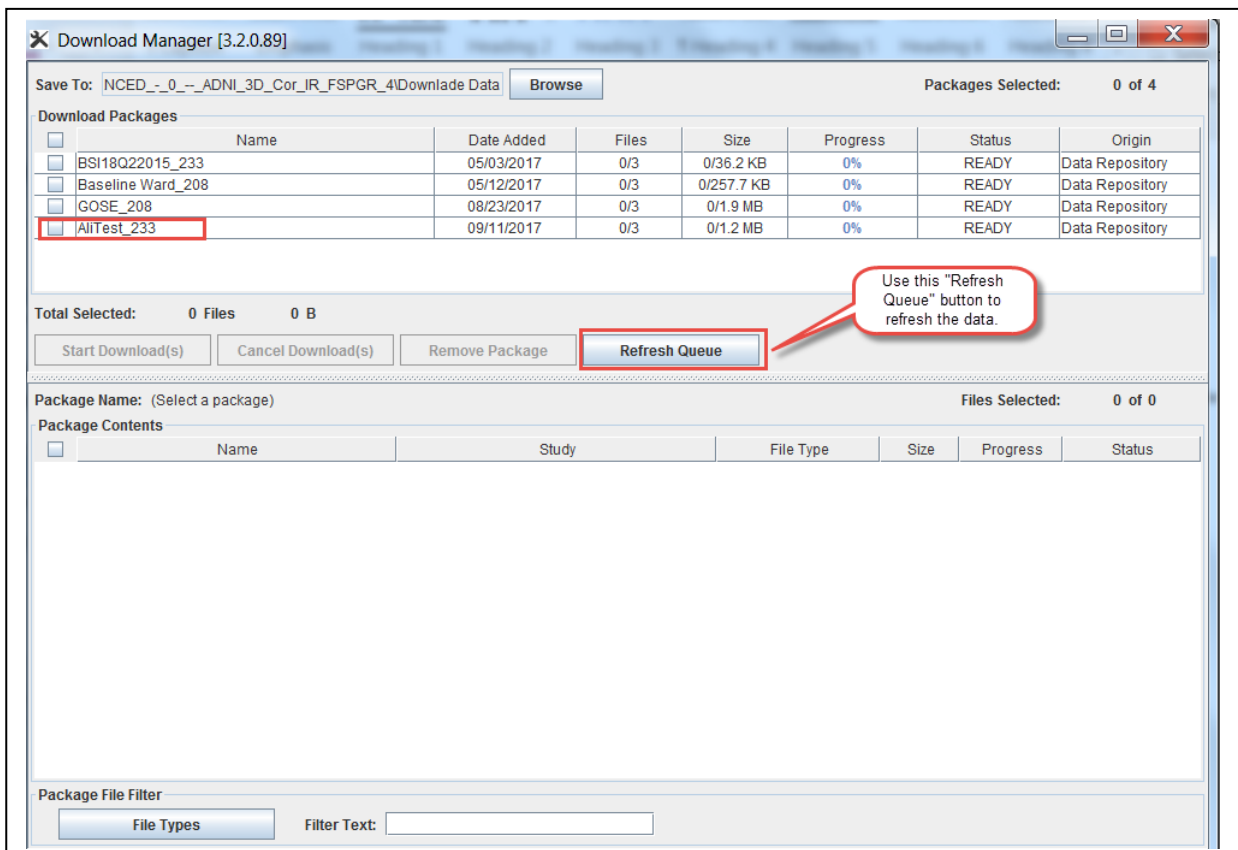
8. In the Download Manager window, Click the **Browse** button to select a directory where to download datasets.



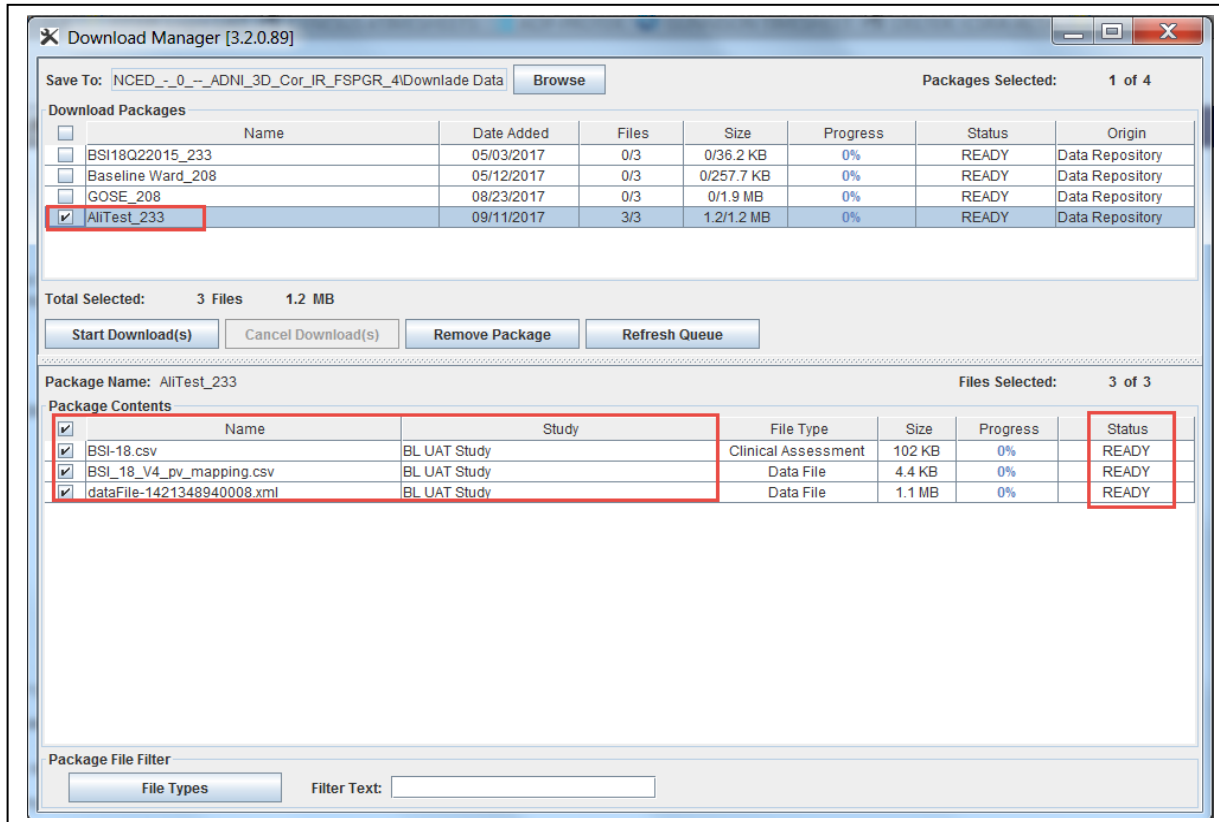
9. Navigate to the location on your computer of the working directory where you want the file to be downloaded. Select the folder, and then click **Open**.



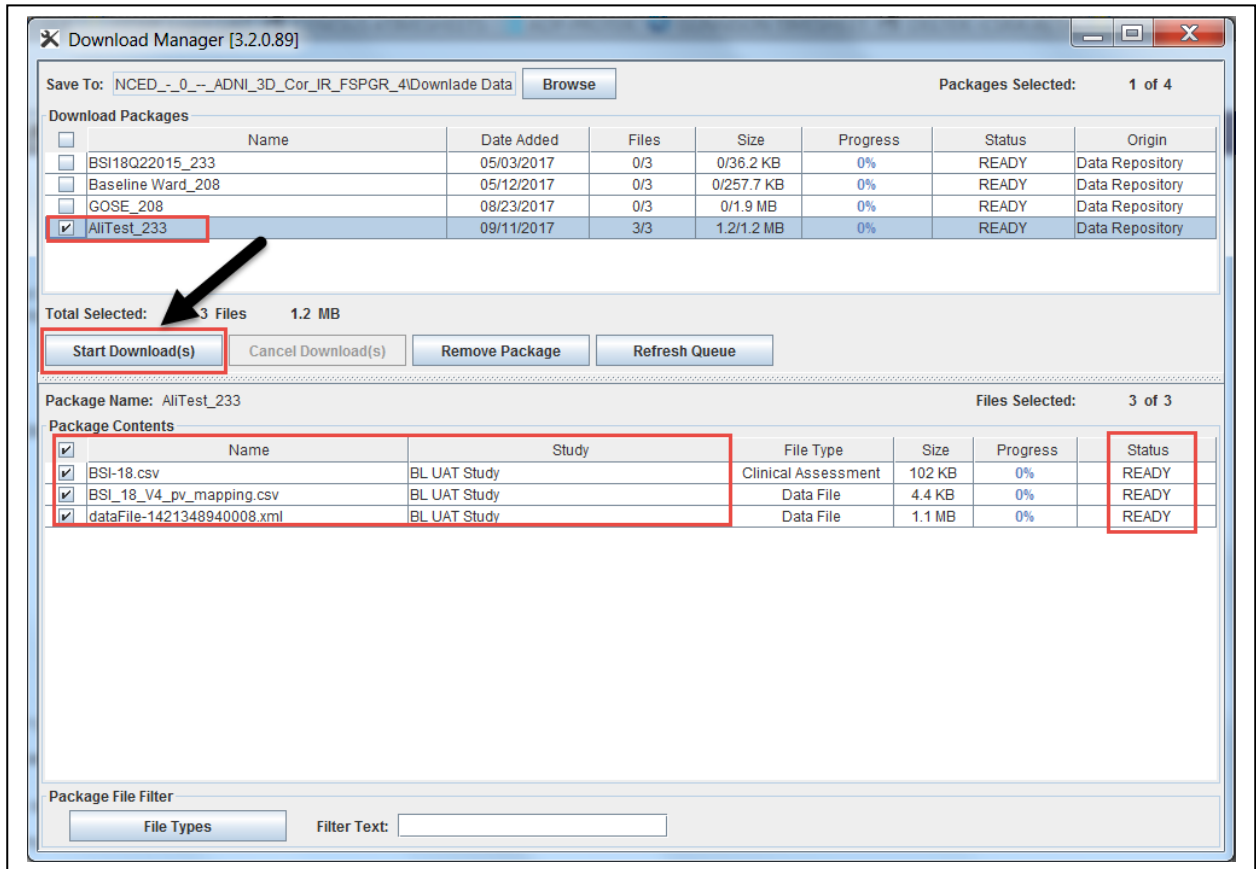
10. Select the files you want to download by clicking the **check box** next to the file name. Note that the status for selected datasets changes to "**READY**" as shown in the next step.



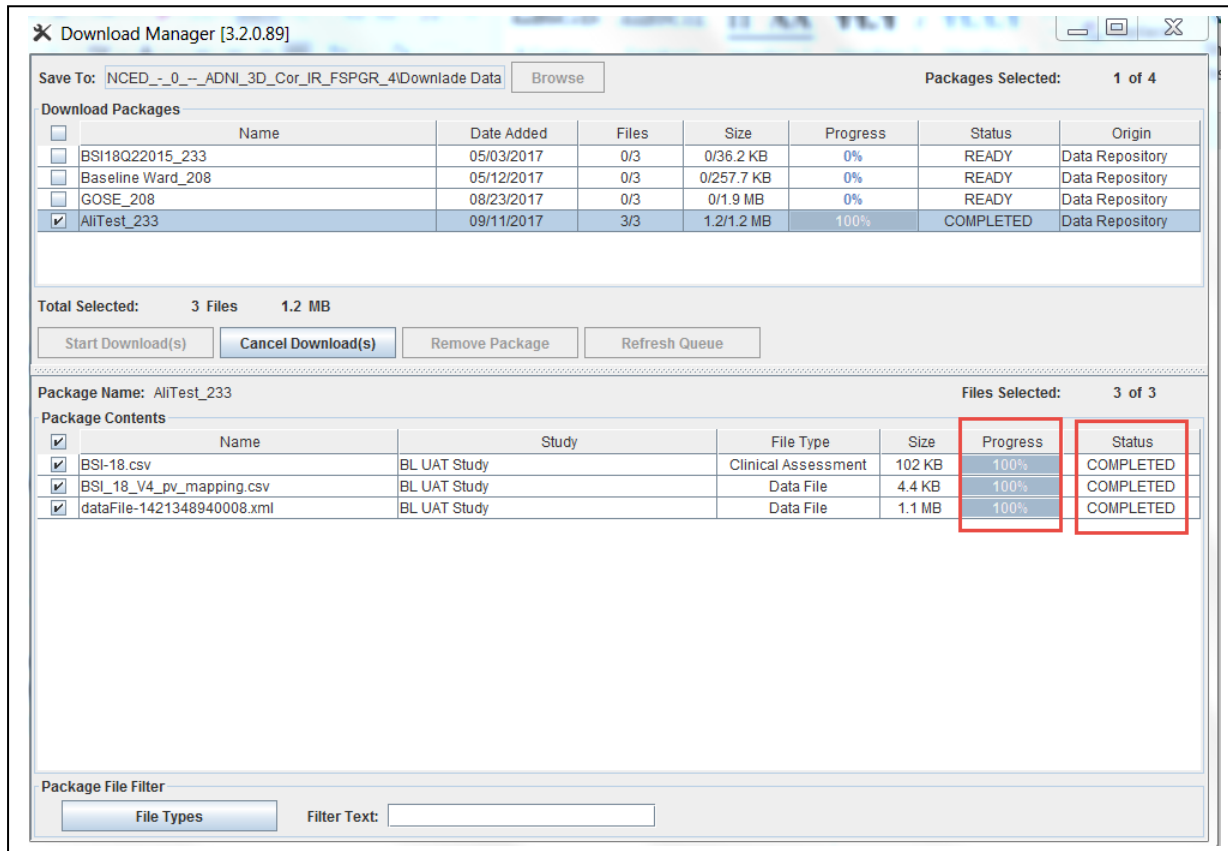
11. The status of the selected datasets are populated in the Package Contents area in the table with the statuses changed to “**READY**” as shown below. Click the **Start Download** button.



12. Click **Start Download** button.

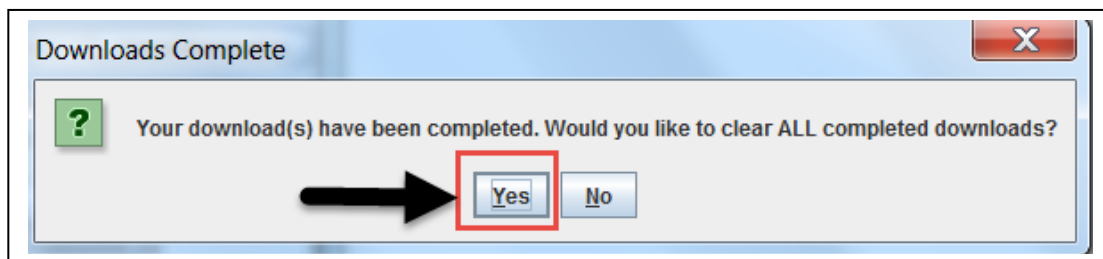


13. The screen will update as file(s) are being downloaded. The download progress will appear in the Progress column. For successful downloads, the status will be designated as **Completed**.



14. A pop-up **Downloads Complete** window page appears with the message: *Your download(s) have been completed. Would you like to clear ALL completed downloads?* Click the **Yes** button to clear ALL completed downloads. Click the **No** button to leave ALL completed downloads in the Download Manager.

You may navigate to the working directory and open downloaded files from there.




11.2.1 Best Practices

- ❖ To stop download(s), use the Stop Download(s) button.
- ❖ To delete download(s), use the Delete Download(s) button.
- ❖ To clear completed download(s) use the Clear Completed Downloads button.





ICON KEY

 Notes

 Important

Information

Things to Note:

-  Screen will update as file(s) are being downloaded. If Download is successful, the Status will be designated as **Completed**
-  This allows immediate access to data you have submitted to the Data Repository
-  The **Download tool**, runs locally as a Java Web Start application on a user's computer
-  Requires the Java runtime environment to be installed.

THIS PAGE HAS BEEN LEFT INTENTIONALLY BLANK
